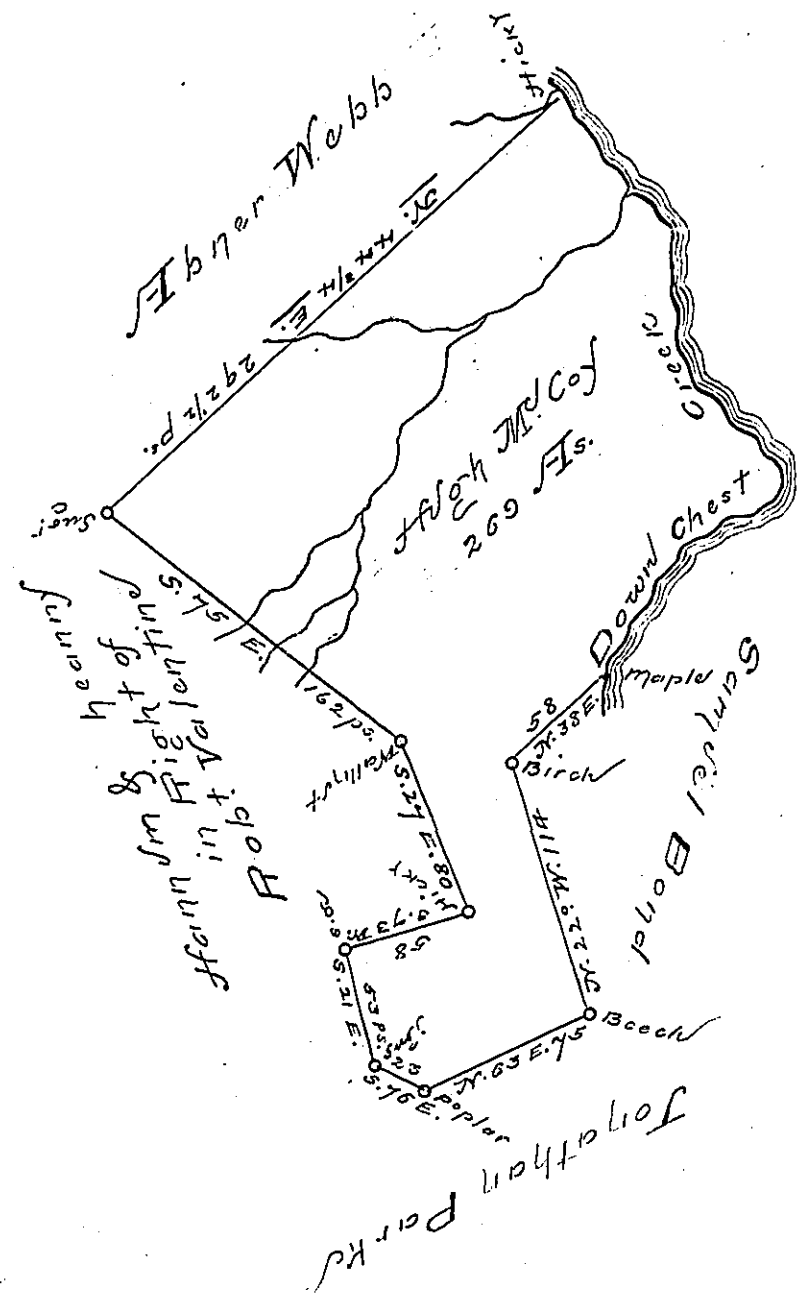


the Courses go from the maple
Down chest to the Hickory

- S. 52° E. 6 ps.
- S. 9 W. 16
- N. 19 E. 10
- N. 64 E. 18
- N. 15 E. 10
- N. 29 W. 10
- N. 48 E. 19
- N. 81 E. 40
- N. 15 W. 8
- N. 72 W. 10
- S. 65 W. 10
- N. 35 W. 20
- N. 67 W. 10
- N. 1 W. 8
- N. 47 W. 16
- N. 10 E. 46
- N. 41 W. 36
- N. 69 W. 20
- N. 58 W. 12
- N. 54 E. 20
- N. 53 1/2 W. 13 1/2 to the Hickory



Situated on the West side of Chest Creek
in Alleghany Township Huntingdon County
containing 269 acres & allowance of six per cent for
Roads &c.

Surveyed the 24th of July 1793 on for Hugh
W. Coy on warrant dated the 27th day of March 1793.

Daniel Bodhrad Esquire J. John Cavan D.S.

IN TESTIMONY that the above is a copy of the original remaining on file in the
Department of Internal Affairs of Pennsylvania, made con-
formably to an Act of Assembly approved the 16th day of
February, 1833, I have hereunto set my Hand and caused
the Seal of said Department to be affixed at Harrisburg, this

— six & 4 — day of — Frost — 1895.

James W. Latta
Secretary of Internal Affairs.